

FRONIUS IG DatCom

Control, Communication and Analysis Center for your PV System

- Expandable Data Communication for FRONIUS IG inverters
- Easy Plug-n-Play installation
- Sophisticated software
- Remote monitoring

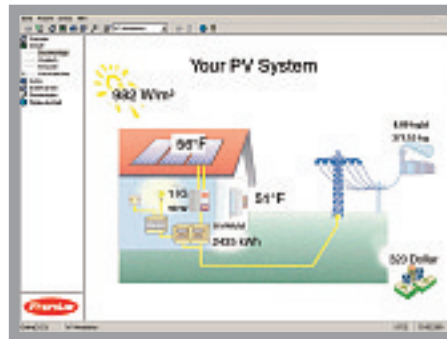
Remote data communications and data logging features can easily be added to transform your FRONIUS IG inverter into a sophisticated data acquisition system and weather monitoring station.

FRONIUS IG.access

Easy to use analysis software for your PC. From simple to sophisticated; you can view, print, and export your system data in unlimited ways. FRONIUS IG.access is bundled together with your FRONIUS IG DatCom System at no additional cost.

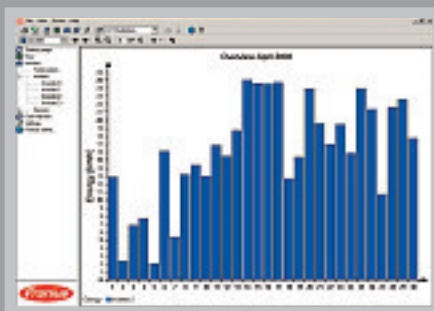
Requirements:

- Pentium 266MHz or higher
- Microsoft Windows 98®, Windows Me®, Windows NT®, Windows XP®, Windows 2000®

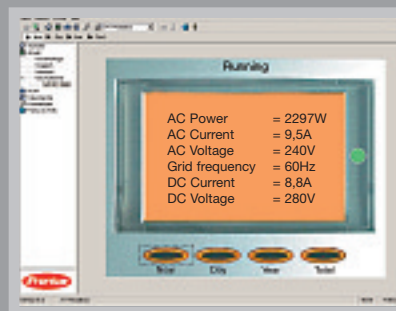


All data viewable on the IG inverter display and data from optional sensors can also be viewed on your PC. Data can be downloaded real time, or cumulative for the day, the year, or since installation. FRONIUS IG.access lets you view data in line charts or bar graphs. Comparison of data from different days, different inverters, and many other possibilities exist.

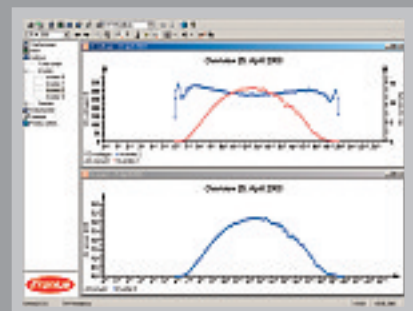
Full configuration information along with examples, cable connections, distances, and item numbers are at www.fronius.com/solar.electronics/



This monthly Overview Chart shows the parameters of your PV system, e.g. the daily energy output.



This screen shows real-time values you can view on your FRONIUS IG display as well.



This graph compares different parameters such as AC power output and DC power input.



POWERING YOUR FUTURE

Plug-n-Play Components



The DatCom's modular design allows you to purchase only what you need. The fully Plug-n-Play components make for a simple and quick installation that can be expanded, changed or moved to another system at any time. With flexibility built in by design, future developments are already compatible.

Datalogger Box

One Datalogger Box is required per DatCom system. The Datalogger coordinates data traffic and ensures that even large quantities of data are obtained and distributed flawlessly. It also stores the data collected from all FRONIUS IG inverters and any sensors in your weather station. Connection to a PC or an external modem allows you to monitor your PV system from anywhere in the world.



COM Card

A communications card is required for each FRONIUS IG inverter in your DatCom system. This can be integrated during production or as a retrofit and simply plugs into one of the available slots. The COM Card supplies power to the DatCom components.

Sensor Box

A Sensor Box is required for use with environmental or other sensors used in your data acquisition. Each Sensor Box allows connection of up to six sensors:



- 2 temperature channels (PT 1000)
- 1 irradiance channel (Voltage input 0-1V)
- 2 digital inputs
- 1 standard 20mA current interface



Cables

Standard cables make the connection job quick and simple. Only two types of cables are needed to make all connections. RJ 45 connectors and CAT5 cables are used to link the inverters and DatCom components together.

Number of inverters per Datalogger Box	1 with Datalogger <i>easy</i> Box, up to 100 with Datalogger <i>pro</i> Box
Dimensions (l x w x h)	7.76 x 4.33 x 2.24 inches (197 x 110 x 57 mm)
Memory Duration (1 IG inverter)	Up to 1000 days
PC Interface/ connectors	USB
Modem Interface/ connectors	RS 232/ 9 pin DSUB
Inter component Interface/ connectors	RS 485/ RJ 45



Fronius USA LLC, Solar Electronic Division
 10421 Citation Drive, Suite 1100, Brighton, MI 48116
 E-Mail: pv-us@fronius.com
www.fronius-usa.com