

Sun Xtender® PVX-4050HT Solar Battery Specifications
[Printable PVX-4050HT data sheet](#)

Industry Reference	Voltage	Nominal Capacity Ampere Hours @ 25° C (77° F) to 1.75 Volts per cell									Length		Width		Height		Weight	
		1 Hour Rate	2 Hour Rate	4 Hour Rate	8 Hour Rate	24 Hour Rate	48 Hour Rate	72 Hour Rate	100 Hour Rate	120 Hour Rate	in	mm	in	mm	in	mm	Lbs	Kg
Group L16	6v	266 Ah	345 Ah	360 Ah	376 Ah	405 Ah	424 Ah	434 Ah	443 Ah	448 Ah	11.64	296	6.95	177	15.73	399	120	54.4

Specifications subject to change without notice.

VRLA-AGM Deep Cycle Battery for Off Grid and Grid Tied Systems.

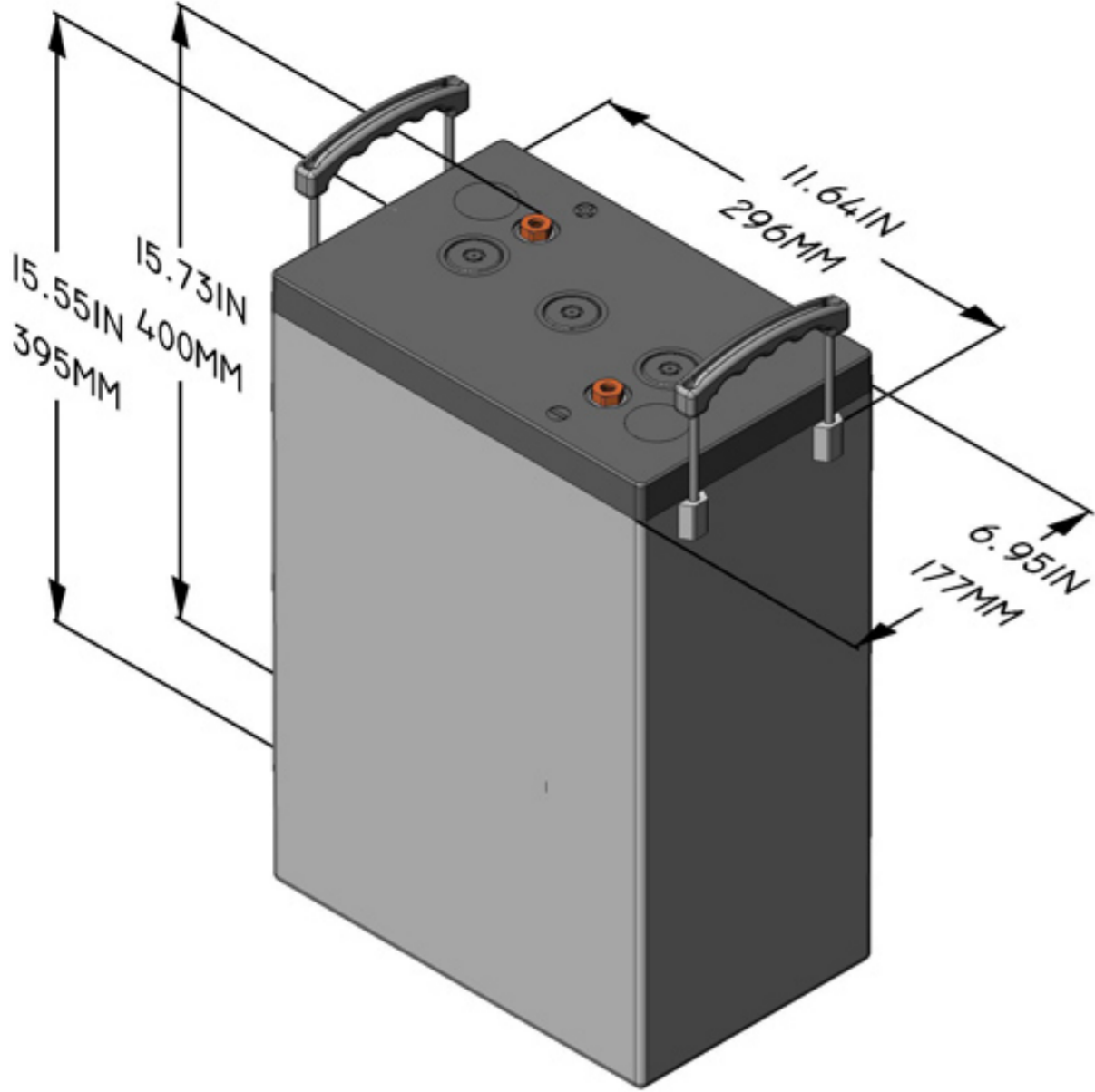
This newest member of the SunXtender® solar battery product line is the L-16 battery size, a well known 6-volt option used in both grid tied and off grid renewable energy storage systems.

PVX-4050HT boasts the highest capacity in the 6-volt solar battery series, with a newly designed handle providing a comfortable hand grip for safe lifting.

VRLA-AGM: Valve Regulated Lead Acid battery with Absorbent Glass Mat. The sealed, maintenance free design means no spilling or spewing, no watering, and the option to operate upright, on its side, or on its end.

See the Sun Xtender solar battery Technical Manual for details.

Terminal Options for PVX-4050HT

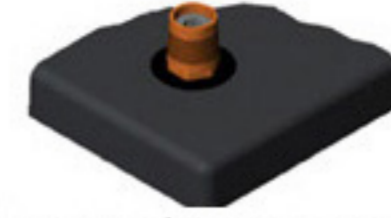


PVX-4050HT Battery Outline Drawing

Copper Alloy Corrosion Free Connections
for Maximum Conductivity



M8 Threaded Insert (Copper Alloy)



"A" SAE Automotive Post (Copper Alloy)
Available as a separate kit, or installed at the factory
Kit Part Number: 6918

Sun Xtender® Solar Batteries
P: 1-800-757-0303 | F: 626-813-1235
2009 West San Bernardino Road, West Covina, CA 91790
© 2017 Concorde® Battery Corporation