

# Sunny Boy 1100U



The leading grid-tied photovoltaic inverters in Europe and America

UL 1741 Listed  
for grid  
interactive  
inverters

5-year  
comprehensive  
warranty

Rugged NEMA  
4X stainless steel  
outdoor  
enclosure  
standard

Exceptional  
reliability  
and energy  
capture ratio

Easy to install  
three-point  
mounting system

Comprehensive  
communications  
and data  
collection  
options

SMA's Modular  
String inverter  
design is  
expandable to  
virtually any  
system size

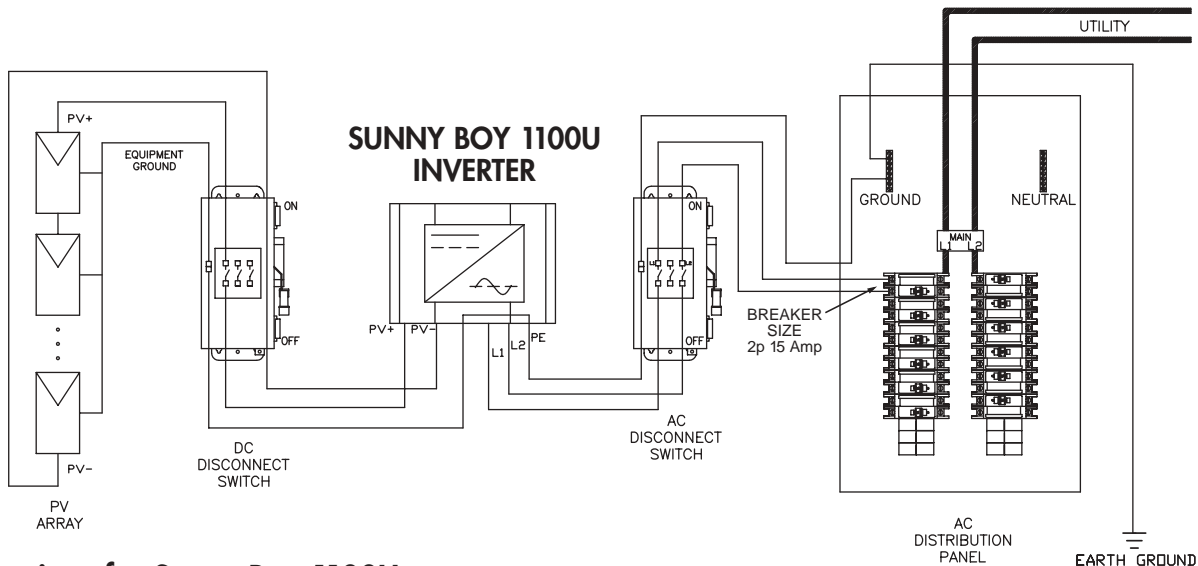


LISTED  
1741, 1998



Shown with optional display

The SMA Sunny Boy inverter, the most popular grid-tied photovoltaic inverter in Europe, is now UL 1741 Listed and available in North America. Sunny Boy's extensive track record in some of the world's most demanding markets has made it the favorite among PV professionals everywhere. Over 200,000 Sunny Boy inverters have been installed worldwide. Having achieved the highest reliability of any PV inverter, Sunny Boy gained immediate acceptance in the US and Canadian markets. Superior design, rock-solid German engineering, and exceptional real-world efficiency have made Sunny Boy the top choice for American solar designers. These professionals know that Sunny Boy is a grid-tied inverter that they can recommend without reservation and install with confidence.



## Specifications for Sunny Boy 1100U

Inverter Technology	Real sine-wave, current source, high frequency PWM
AC Input Voltage	213–262 (240 V AC)
AC Input Frequency	59.3–60.5 (60 Hz), 50 Hz also available
DC Input Voltage	129–400 V DC
Peak Power Tracking Voltage	145–400 (at 240 V AC)
Minimum DC Input Voltage	129 V DC
Maximum DC Input Voltage	400 V DC
Maximum Array Input Power (DC @ STC)	1440 W
Maximum AC Power Output	1100 W (240 V AC)
Current THD	Less than 4%
Power Factor	Unity
Peak Inverter Efficiency	93.0%
Cooling	Convection cooling (no fan)*
PV Start Voltage	180 V DC
Maximum AC Output Current	4.6 A
Maximum DC Input Current	9.5 A
Maximum Array Size (STC)	1500
DC Voltage Ripple	Less than 10%
Power Consumption	0 W nighttime, < 4 W standby
Ambient Temperature Rating	45 °C
Enclosure	NEMA 4X stainless steel
Size	12.68 W x 12.60 H x 7.09 D inches (322 W x 320 H x 180 D mm)
Weight	56.26 lbs (21 kg)
Compliance	United States: UL 1741, E210376, UL 1998, IEEE 519, IEEE 929 ANSI C62.41 C1 & C3, FCC part 15 A&B

ALL SPECS MAY CHANGE WITHOUT NOTICE

*Sunny Boy's unsurpassed reliability and efficiency is the result of SMA's manufacturing philosophy that combines simple design with robust execution. SMA's state-of-the-art maximum power point tracking performance results in greater real-world energy capture than any other grid-tied PV inverter. Sunny Boy's safety and reliability record is also exceptional due, in part, to the inverter's redundant grid monitoring and built-in ground fault detection and interruption protection. The inverter's IGBT power stage generates a nearly perfect sine wave with the lowest harmonic distortion in the industry and meets ultra-strict FCC EMC standards. SMA's unique String Inverter technology makes future system expansion simple. SMA advanced communication options are available to satisfy almost any application.*

\*Optional external fan (Sunny Breeze) available

DISTRIBUTED BY

SMA America, Inc., 12438-C Loma Rica Drive, Grass Valley, CA 95945  
Phone 530-273-4895 • Fax 530-274-7271  
www.SMA-AMERICA.com • email: info@SMA-AMERICA.com

**Solar Today...  
Energy Tomorrow**

