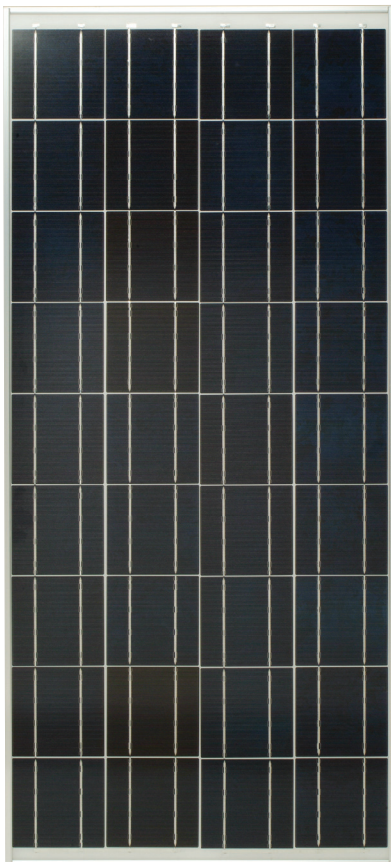


SHARP®

solar electricity

80 WATT

OFF GRID MODULE



NE-80EJEA

OFF GRID 80 WATT MODULE FROM THE WORLD'S TRUSTED SOURCE FOR SOLAR.

Using breakthrough technology, made possible by nearly 50 years of proprietary research and development, Sharp's NE-80EJEA solar module incorporates (36) 125 mm square solar cells with an advanced surface texturing process to increase light absorption and improve efficiency. Common applications include cabins, solar power stations, pumps, beacons, and lighting equipment.

You have many manufacturers to choose from when considering solar for your home or business. Partner with us to see why Sharp is a global leader in solar technology.

ENGINEERING EXCELLENCE

Module offers industry-leading performance for a variety of electrical power requirements.

DURABLE

Designed and tested to withstand rigorous weather conditions.

RELIABLE

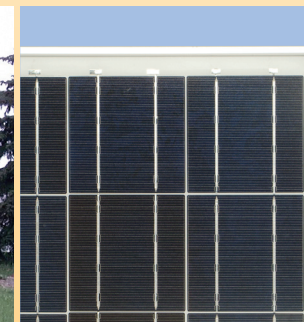
25-year limited warranty on power output.

HIGH PERFORMANCE

Solar cells have an advanced surface texturing process to increase light absorption and improve efficiency.



Sharp off grid modules offer industry-leading performance for a variety of applications.



Solder-coated grid results in high fill factor performance under low light conditions.

SHARP: THE NAME TO TRUST

When you choose Sharp, you get more than well-engineered products. You also get Sharp's proven reliability, outstanding customer service and the assurance of our 25-year limited warranty on power output. A global leader in solar electricity, Sharp powers more homes and businesses than any other solar manufacturer worldwide.

BECOME POWERFUL

80 WATT

NE-80EJEA

ELECTRICAL CHARACTERISTICS


Maximum Power (Pmax)*	80 W
Tolerance of Pmax	+10%/-5%
Type of Cell	Polycrystalline silicon
Cell Configuration	36 in series
Open Circuit Voltage (Voc)	21.6 V
Maximum Power Voltage (Vpm)	17.3 V
Short Circuit Current (Isc)	5.15 A
Maximum Power Current (Ipm)	4.63 A
Module Efficiency (%)	12.41%
Maximum System (DC) Voltage	600 V
Series Fuse Rating	10 A
NOCT	47.5°C
Temperature Coefficient (Pmax)	-0.485%/°C
Temperature Coefficient (Voc)	-0.36%/°C
Temperature Coefficient (Isc)	0.053%/°C

*Measured at (STC) Standard Test Conditions: 25°C, 1 kW/m² insolation, AM 1.5

MECHANICAL CHARACTERISTICS

Dimensions (A x B x C below)	21.1" x 47.2" x 1.8"/537 x 1200 x 46 mm
Type of Output Terminal	Junction Box
Weight	20.9 lbs / 9.5 kg
Max Load	50 psf (2400 Pascals)

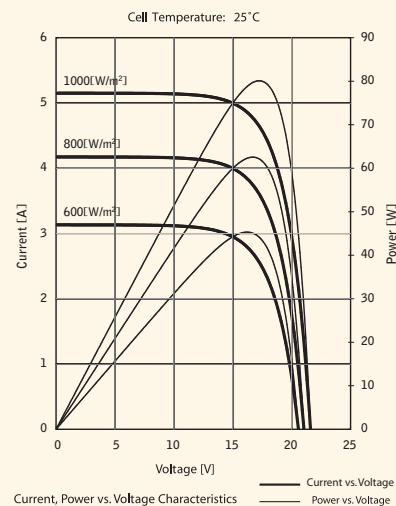
QUALIFICATIONS

UL Listed	UL 1703	
Fire Rating	Class C	
FM	NI CL1 DIV2 GPS A, B, C, D	

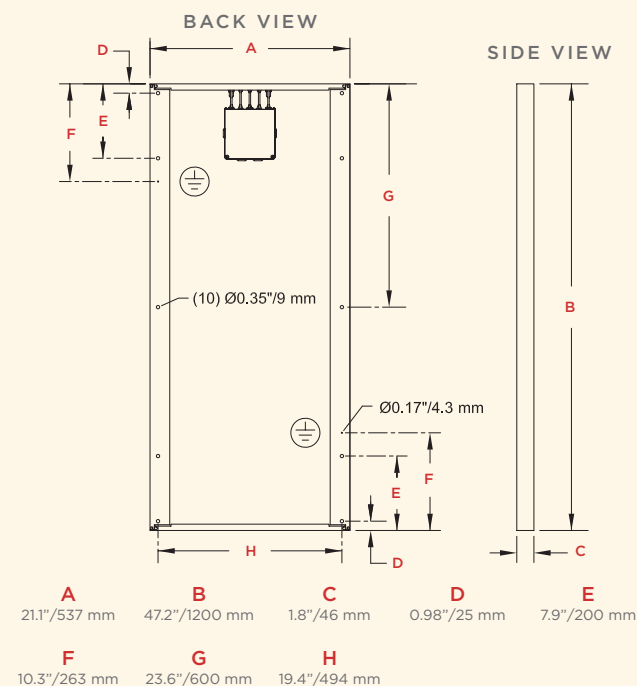
WARRANTY

25-year limited warranty on power output
Contact Sharp for complete warranty information

IV CURVES



DIMENSIONS



Contact Sharp for tolerance specifications

Design and specifications are subject to change without notice.
Sharp is a registered trademark of Sharp Corporation. All other trademarks are property of their respective owners. Contact Sharp to obtain the latest product manuals before using any Sharp device. Cover photo: Solar installation by Hudson Valley Clean Energy, Rhinebeck, NY.

SHARP®

SHARP ELECTRONICS CORPORATION
5901 Bolsa Avenue, Huntington Beach, CA 92647
1-800-SOLAR-06 • Email: sharpsolar@sharpusa.com
www.sharpusa.com/solar