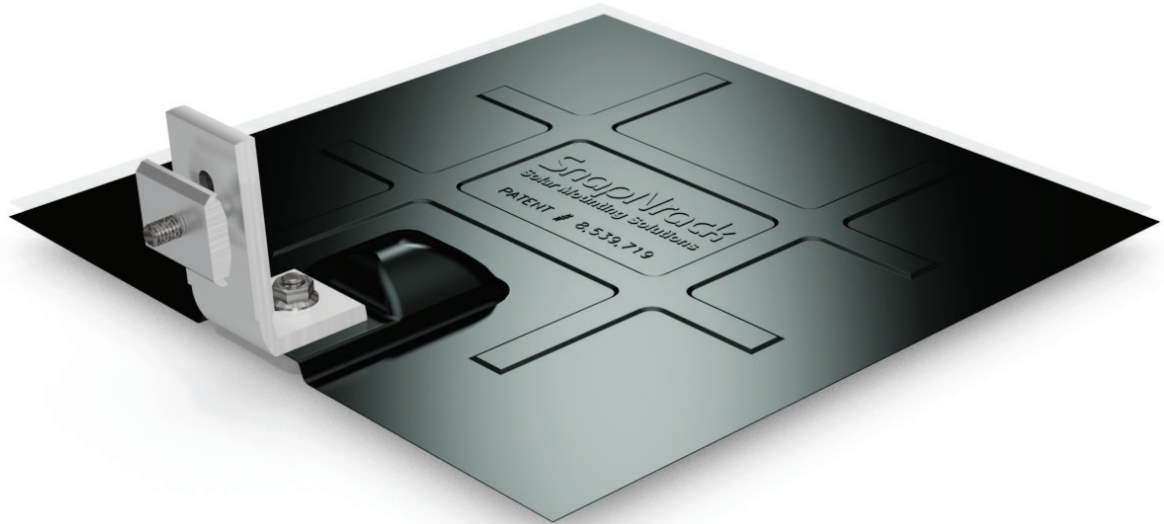


Flashed L Foot



Reliable & Weatherproof Roof Attachment



Cutting of shingles not required



Preassembled, snap-in hardware reduces installation time



Single tool installation, using a standard 1/2" socket



Included in Series 100 UL 2703 Listing

Start Installing the Flashed L Foot Today

RESOURCES
DESIGN
WHERE TO BUY

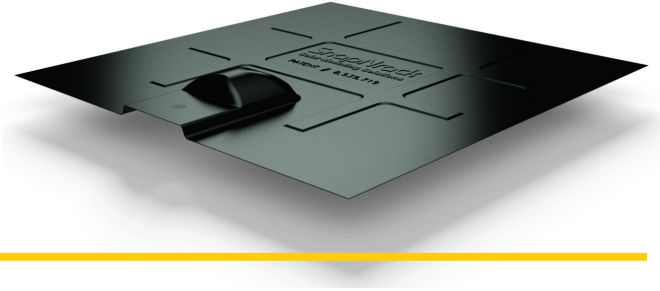
snapnrack.com/resources
snapnrack.com/configurator
snapnrack.com/where-to-buy

SnapNrack Series 100 Flashed L Foot Kit

is an industry-leading, weatherproof solution for attaching to composition shingle roofs. The Flashed L Foot provides a fully flashed method for mounting the SnapNrack Series 100 system. The combination of Series 100 and the Flashed L foot is guaranteed to improve labor times and ensure the highest quality install possible.

Flashing

- Available in black galvanized steel or aluminum for enhanced corrosion resistance
- L Foot is attaches to bottom edge of flashing, removing the need for shingle cutting
- Innovative stamped features provide increased rigidity

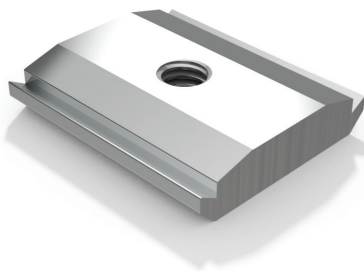
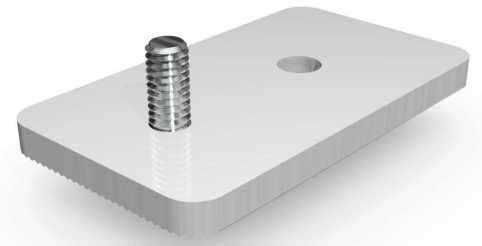


L Foot

- Engineered for maximum adjustability with the ability to orient in any direction
- Vertical adjustability up to 3" using available spacers

L Foot Base

- Provides a long lasting watertight seal over the life of the system that does not rely on rubber (elastomeric seals) that will degrade over time
- Easily installs with off-the-shelf lag screws



Channel Nut

- Provides snap-in installation to the rail channel with no drilling required
- Wide range of adjustability due to sliding ability in rail prior to final tightening

Quality. Performance. Innovation.

SnapNrack solutions are focused on simplifying the installation experience through intuitive products and the best wire management in the industry.

SnapNrack™
Solar Mounting Solutions

Available from:
SolarPanelStore.com
EVERYTHING YOU NEED TO GO SOLAR!

877-732-2860

www.snapnrack.com

contact@snapnrack.com

© 2016 by SnapNrack Solar Mounting Solutions. All rights reserved